

Wall Mounted Touch Panel

Model No.: T15(IT)

4 Zone/1-5 color in one/Glass touch panel/Color wheel/AC input/DMX 512 and RF 2.4G signal output



CE RoHS LVD RED

Features

- Touch panel 4 zone 1-5 color universal DMX512 master, can also be used as 4 zone 1-5 color universal RF remote.
- Each zone can be set as single color, dual color(WW/CW), RGB, RGBW or RGB+CCT light type.
- DMX signal output, comply to standard DMX512 protocol, compatible with DMX decoder from any supplier.
- When used as RF remote, each zone can remote control multiple Skydance's 2.4G LED controllers.
- Ultra sensitive high strength glass touch panel with touch color wheel in the middle.
- Smooth and accurate color adjustment by touching the color wheel.
- Touch keys with chord tones and LED indicator.
- White & Black glass panel available.

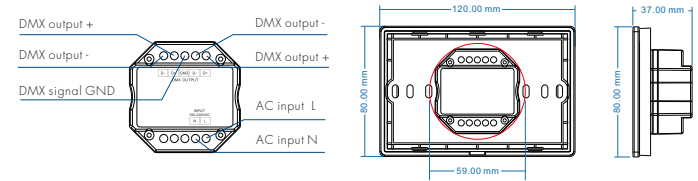
Technical Parameters

Input and Output	
Input voltage	100-240VAC
Input current	Max 0.1A
Output signal	DMX512, RF 2.4GHz
Safety and EMC	
EMC standard [EMC]	ETSI EN 301 489-1 V2.2.3 ETSI EN 301 489-17 V3.2.4
Safety standard[IVD]	EN 62368-1:2020+A11:2020
Radio Equipment[RED]	ETSI EN 300 328 V2.2.2
Certification	CE,EMC,LVD,RED
Warranty	
Warranty	5 years

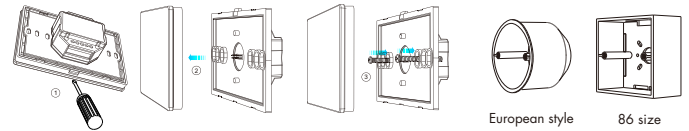
Dimming data	
Input signal	Touch key + RF 2.4GHz
RF Control distance	10m (Barrier-free space)
Dimming level	256 levels
Dimming range	0-100%

Environment	
Operation temperature	Ta: -30°C ~ +55°C
Case temperature (Max.)	Tc: +65°C
IP rating	IP20

Mechanical Structures and Installations



Installation diagram:



Typical base as below:

Key function



Zone light type setting

Each zone can match single color, dual color(WW/CW), RGB, RGBW, or RGB+CCT(WW/CW) controller or lamp.

Touch power key to turn on light, turn off light.

then immediately long press power key 5 seconds, enter zone light setting:
long press Zone 1/2/3/4 key 2 seconds, select current zone you want to change,
then long press below five key 2 seconds to change current zone light type.

: Long press 2 seconds, set current zone as single color type.

: Long press 2 seconds, set current zone as dual color type.







: Long press 2 seconds, set current zone as RGB color type.

: Long press 2 seconds, set current zone as RGBW type.

: Long press 2 seconds, set current zone as RGB+CCT type.

For example, if you want to change zone 1 light type as RGB type,
please long press Zone 1 key 2 seconds firstly, then long press 2 seconds will set Zone 1 as RGB type.

When in zone light type setting state, all above long press key operation, the LED indicator will lighten red and blue.
Short press power key or touch color wheel, or timeout 10s, quit zone light type setting.

-  — Turn on/off all zone light.
-  — RGB color / Color temperature.
Press RGB or CCT key to switch between RGB wheel and CCT wheel.
-  — RGB color, 24 levels.
-  — For dual color or RGB+CCT(WWW/CW), adjust color temperature by WWW/CW channel, short press 11 levels, long press 2s get max or min color temperature.
For RGB, adjust color temperature by mix R/G/B channel, 11 levels.
For RGBW, adjust color temperature by adjust W channel brightness, 11 levels.
long press 2s get 100% or 0% White channel brightness.
- M** — Short press play 10 builtin dynamic mode, long press 2s run mode-cycle.
-  — For dynamic RGB mode, adjust speed, short press 10 levels, long press 2s get the default speed.
For static RGB color, adjust saturation, namely change current static RGB color to mixed white slowly, short press 11 levels, long press 1-6s for continuous 256 levels adjustment.
-  — Adjust brightness, short press 10 levels, long press 1-6s for continuous 256 levels adjustment.
- S** — Short press replay scene. long press 2s to save the current color into the scene.
4 zone recall or save synchronously.

1 2 3 4

Short press turn on zone light and select zone simultaneously, long press 2s turn off zone light.
4 zone control separately or synchronously, each zone could control multiple receivers.
Only multiple zone have same light type can select synchronously.

Note:

- For single color, touch RGB/CCT wheel only change brightness, RGB, MODE, SPEED key is invalid.
- For dual color, touch RGB/CCT wheel only change color temperature, RGB, MODE, SPEED key is invalid.
- For RGB, when touch CCT wheel, adjust color temperature by mix R/G/B channel.
- For RGBW, when touch CCT wheel, adjust W channel brightness.
- After touch power key to turn off light, wait more than 5 seconds, long press power key 10 seconds will turn on or turn off tone.

Touch Panel work as DMX512 Master

After connect with DMX decoders, please set the DMX decoders address as below:

Light Type	Light color channel	Zone 1 DMX address	Zone 2 DMX address	Zone 3 DMX address	Zone 4 DMX address
Single color	W W W W W	1-5	6-10	11-15	16-20
Dual color	WWW CW WW CW 0	1-5	6-10	11-15	16-20
RGB	R G B 0 0	1-5	6-10	11-15	16-20
RGBW	R G B W W	1-5	6-10	11-15	16-20
RGB+CCT	R G B WWW CW	1-5	6-10	11-15	16-20

Touch Panel work as RF remote

Touch panel 4 zone remote can match with RF controller for single color, dual color(WWW/CW), RGB, RGBW or RGB+CCT light type. End user can choose the suitable match/delete ways. Two options are offered for selection:

Use the controller's Match key

Match:
Short press match key, immediately press zone key of the touch panel.
The LED indicator fast flash a few times means match is successful.

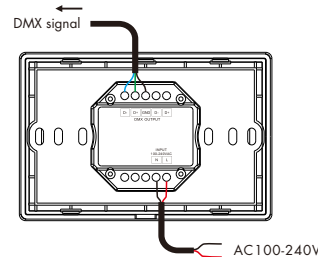
Delete:
Press and hold match key for 5s to delete all match, The LED indicator fast flash a few times means all matched remotes were deleted.

Use Power Restart

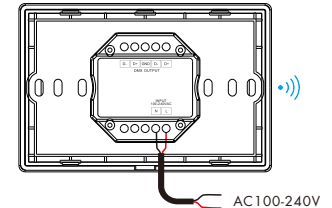
- Match:**
- Switch off the power of the receiver, then switch on power.
- Repeat again.
- Immediately short press zone key 3 times on the touch panel.
- The light blinks 3 times means match is successful.
- Delete:**
- Switch off the power of the receiver, then switch on power.
- Repeat again.
- Immediately short press zone key 5 times on the touch panel.
- The light blinks 5 times means all matched remotes were deleted.

Wiring Diagram

Touch panel work as DMX512 master



Touch panel work as RF remote



Dynamic mode list

No.	Name	No.	Name
1	RGB jump	6	RGB fade in and out
2	RGB smooth	7	Red fade in and out
3	6 color jump	8	Green fade in and out
4	6 color smooth	9	Blue fade in and out
5	Color temperature smooth	10	White fade in and out